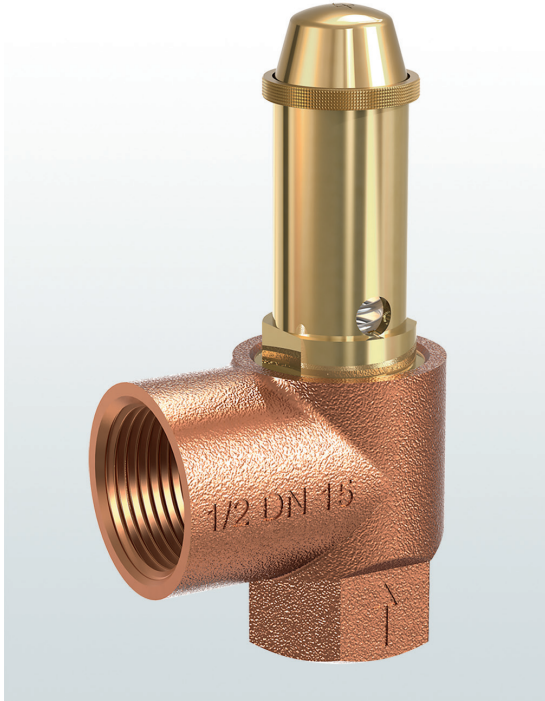


651mWNK

Safety valves made of gunmetal, angle-type with threaded connections

→ **Series 651mWNK**



■ SUITABLE FOR

Potable water cold	up to 40°C	
Potable water hot	up to 95°C	

■ EXAMPLES OF USE

For the protection of:

- closed circuit water heaters for drinking water and process water according to TRD 721, DIN 4753 and DIN 1988 for temperatures up to max. 95°C.

The safety valve is installed in the cold water inlet of the hot water heater according to DIN 1988.

- water heaters for potable and process water and -storage tanks

Safety valves are set and sealed at the factory.

■ APPROVALS

TÜV Type test approval 532	W
EU type examination	W
TSG ZF001-2006	W
TR ZU 032/2013 - TR ZU 010/2011	W

Type approval ACS

Requirements	
TRD 721	
DIN 4753	
DIN 1988	
PED 2014/68/EU	

Classification society	
American Bureau of Shipping	ABS
DNVGL	DNVGL
Bureau Veritas	BV
Russian Maritime Register of Shipping	RS
Lloyd's Register EMEA	LR EMEA



■ MATERIAL



■ SPECIFICATION



1/2" – 1 1/4"



– 10°C to + 95°C



3,0 – 10 bar

■ MATERIALS

Component	Material	DIN EN	ASME
Inlet body	Gunmetal	CC499K	CC499K
Outlet body	Gunmetal	CC499K	CC499K
Internal parts	Brass	CW617N	CW617N
Spring	Spring steel with anti-rust protection	1.1200	ASTM A228

Series 651mWNK ■ VALVE VERSION

m	Standard with diaphragm	The diaphragm prevents the medium entering into the spring housing and protects moving parts from being affected by the medium.
----------	-------------------------	---

■ MEDIUM

WN	Warm water (national for Germany)	Water heaters with temperatures $\leq 95^{\circ}\text{C}$
-----------	-----------------------------------	---

■ TYPE OF LIFTING MECHANISM

K	Standard with twist-type lifting mechanism
----------	--

■ AVAILABLE NOMINAL DIAMETERS AND CONNECTION SIZES

Nominal diameter DN	15	20	25	32
Inlet	1/2" (15)	3/4" (20)	1" (25)	1 1/4" (32)
Outlet	1/2" (15)			
	3/4" (20)	■		
	1" (25)		■	
	1 1/4" (32)			■
	1 1/2" (40)			

■ TYPE OF CONNECTION INLET / OUTLET THREADED CONNECTIONS

f / f	Standard	Female thread BSP-P / Female thread BSP-P	DIN EN 10226, ISO 7-1 / DIN EN 10226, ISO 7-1
--------------	----------	---	---

■ SEALS

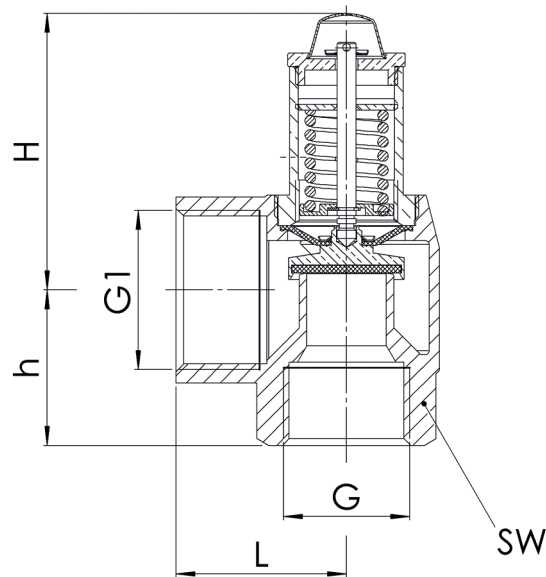
EPDM	Ethylene propylene diene	Elastomere flat seal and diaphragm (up to 100% glycol resistant)	-10°C to +95°C
-------------	--------------------------	--	----------------

NOMINAL DIAMETERS, CONNECTIONS, INSTALLATION DIMENSIONS

Series 651mWNK: Connection, installation dimensions, ranges of adjustment					
Nominal diameter	DN	15	20	25	32
Connection DIN EN 10226-1	G	1/2" (15)	3/4" (20)	1" (25)	1 1/4" (32)
Outlet DIN EN 10226-1	G1	3/4" (20)	1" (25)	1 1/4" (32)	1 1/2" (40)
Installation dimensions in mm	L	34	40	45	55
	H	70	65	75	85
	h	28	34	41	47
	SW	27	32	41	50
Weight	kg	0,3	0,45	0,75	1,1
Set pressure ¹	bar	6; 8; 10	6; 8; 10	6; 8; 10	6; 8; 10

¹Other set pressures available on request against surcharge

MAIN DIMENSIONS, INSTALLATION DIMENSIONS



INDIVIDUAL SELECTION / VALVE CONFIGURATION

Series	Valve version	Medium	Lifting device	Nominal diameter DN	Connection type		Connectiongröße		Seal	Options	Set pressure	Quantity
					Inlet	Outlet	Inlet	Outlet				
651	m	WN	K	25	f	f	25	32	EPDM		6,0	10
651	m	WN	K		f	f			EPDM			
651	m	WN	K		f	f			EPDM			
651	m	WN	K		f	f			EPDM			

ENQUIRY

Copy and send to: order@goetze-armaturen.de.

Order form easily to be found online under the section for each series.

Series 651mWNK: Blowing-off rates at 10% above set pressure					
Nominal diameter DN		15	20	25	32
Set pressure bar		6; 8; 10	6; 8; 10	6; 8; 10	6; 8; 10
Warm water	Contents of the service water tank in l	200	200 1.000	1.000 5.000	5.000
	over to				
	Max. permissible heating output in kW	75	150	250	
Above 5000 l the heat output determines the parameters					26.000
	Heating output in kW				